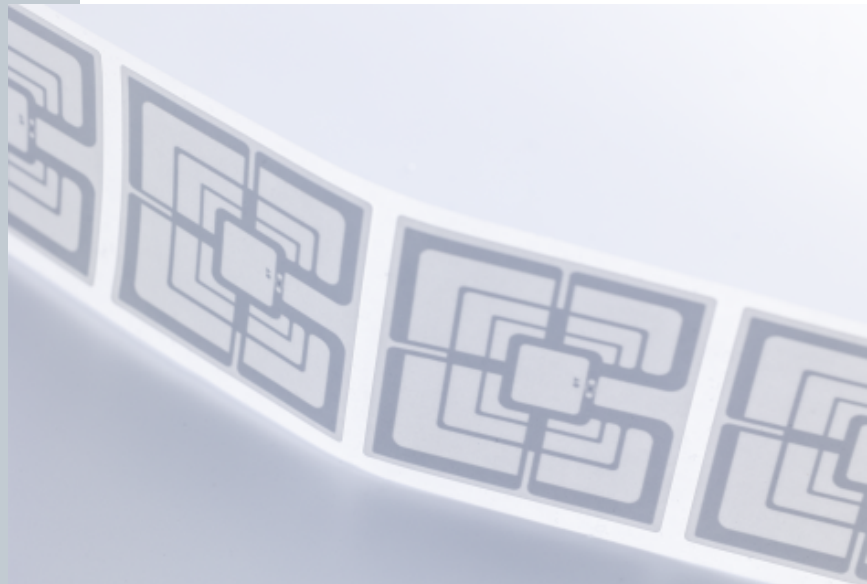


# RFID Inlay Cyclone MAX Impinj Monza M830



### Dimensions (WxH)

47 mm X47 mm (1.833 " X 1.833 ")

### DESCRIPTION

Developed to meet specific customer requirements, the Cyclone tag is ideal for item-level tracking where variability in orientation of inlay is a challenge, such as grocery, apparel and supply chain. The Cyclone MAX offers increased read range and durability for the even the most challenging environments such as logistics and luggage tracking. The omnidirectional performance overcomes readability blindness in such use cases where performance is paramount, even in challenging locations.

### RFID SPECIFICATIONS

Protocol	ISO/IEC 18000-63:2015 and EPCglobal Gen2v2 compliant and supports Impinj Gen2X
Operating Frequency	860 Mhz - 960 Mhz
Chip Type	Monza M830
Unique TID / UID	96 bits
EPC Memory	128 bits
User Memory	No data
Tag type	UHF

### INDUSTRIES

General Merchandise	Logistics
Retail Apparel	Retail Food

### APPLICATIONS



Anti theft



Asset tracking - heavy loading



DC inbound box level



DC Outbound



Inventory visibility



Omnichannel



Store processes (Cycle Count / item locator / POS)

### ARC CATEGORIES

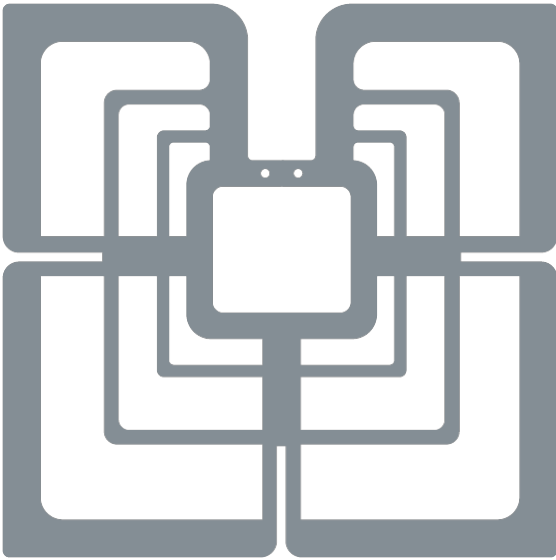
Spec I

Spec O

Spec Q

Spec L

### OTHER CERTIFICATIONS

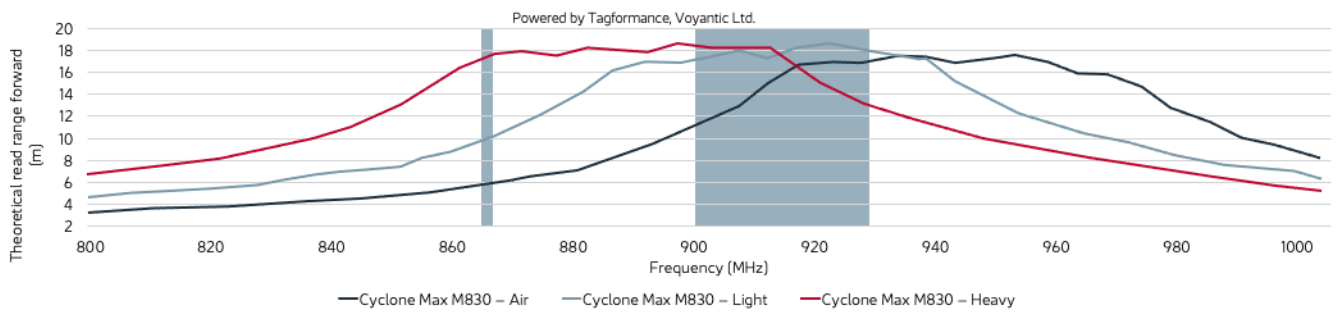


**PERFORMANCE**

ETSI Read Range	10.20 m
FCC Read Range	18.10 m

**READ RANGE**

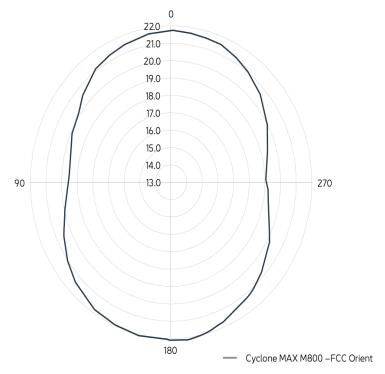
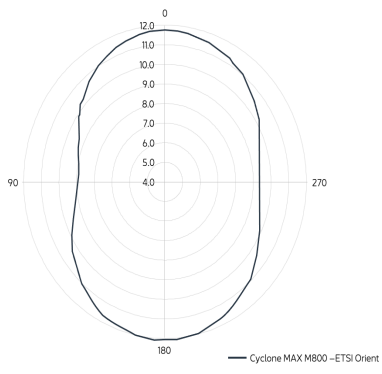
Free Space, Light, & Heavy Loading Conditions



**ORIENTATION SENSITIVITY**

ETSI

FCC



HANDLING GUIDELINES

Read our handling and best practice [guidelines](#)