



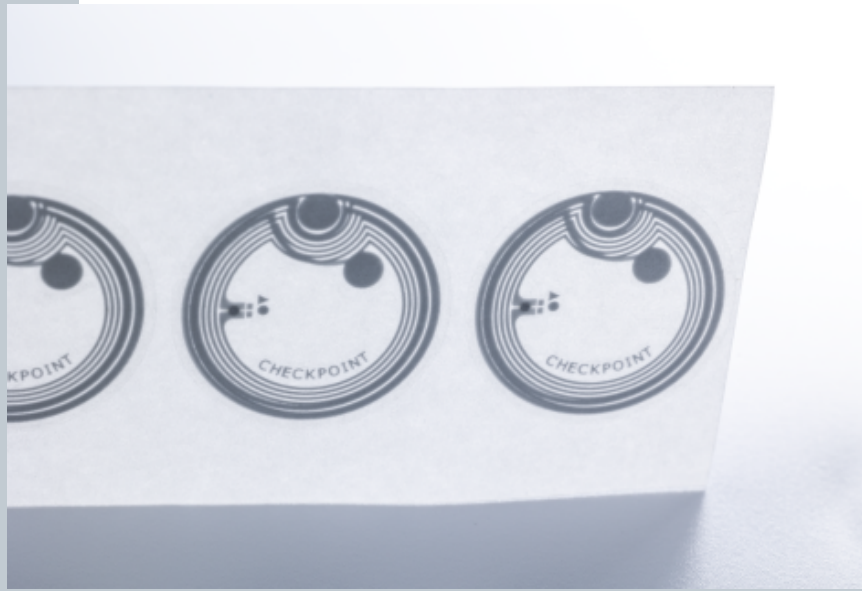
RFID Inlay Eyewall NXP Ntag210

Dimensions (WxH)

22 mm X22 mm (0.858 " X 0.858 ")

DESCRIPTION

Engage on a more meaningful level with your customers pre- and post-sale easier than ever with the Eyewall family of NFC labels. Provide enhanced product information, recommendations and end-of-life information at the tap of a smartphone, with secure product authentication to verify genuine items.



RFID SPECIFICATIONS

Protocol	ISO/IEC 14443A 1-3, NFC Forum T2T
Operating Frequency	13.56 Mhz
Chip Type	Ntag210
Unique TID / UID	UID 7 byte
EPC Memory	n/a
User Memory	48 Bytes freely READ/Write Area (12 or 32 pages)
Tag type	NFC

INDUSTRIES

Healthcare	Retail Apparel
Retail Cosmetics	Retail Food

APPLICATIONS

Consumer engagement

ARC CATEGORIES

OTHER CERTIFICATIONS

PERFORMANCE



READ RANGE

Free Space, Light, & Heavy Loading Conditions

ORIENTATION SENSITIVITY

ETSI

FCC

HANDLING GUIDELINES

Read our handling and best practice [guidelines](#)