



RFID Inlay Eyewall Large NXP Icode Slix 2



Dimensions (WxH)

30 mm X30 mm (1.17 " X 1.17 ")

DESCRIPTION

The Eyewall family of labels enable new NFC-based consumer experience solutions at the tap of a smartphone, with possibilities both pre- and post-sale. Enhance your customer's experience and build greater brand loyalty and engagement using secure, digital experiences all linked back to your products.

RFID SPECIFICATIONS

Protocol	ISO/IEC 15693, NFC Forum T5T
Operating Frequency	13.56 Mhz
Chip Type	Icode Slix 2
Unique TID / UID	UID 64 bits
EPC Memory	n/a
User Memory	2560 bits user memory, organized in 80 blocks of 4 bytes each (last block reserved for counter feature)
Tag type	NFC

INDUSTRIES

Healthcare	Retail Apparel
Retail Cosmetics	Retail Food

APPLICATIONS



Anti theft

Consumer engagement



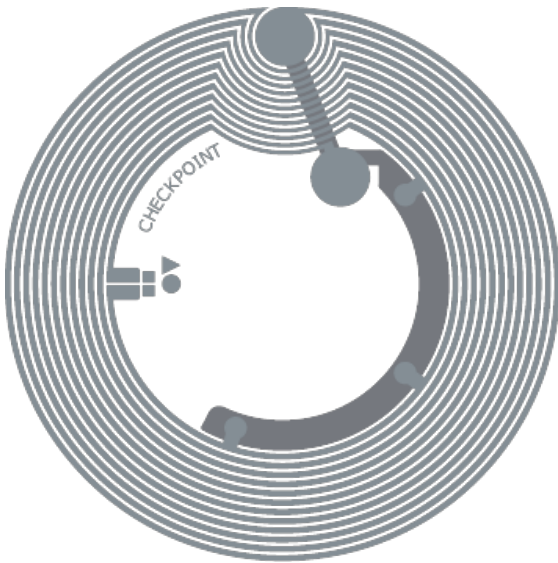
Inventory visibility



Library

ARC CATEGORIES

OTHER CERTIFICATIONS



PERFORMANCE

ETSI Read Range	m
FCC Read Range	m

READ RANGE

Free Space, Light, & Heavy Loading Conditions

ORIENTATION SENSITIVITY

ETSI

FCC

HANDLING GUIDELINES

Read our handling and best practice [guidelines](#)