

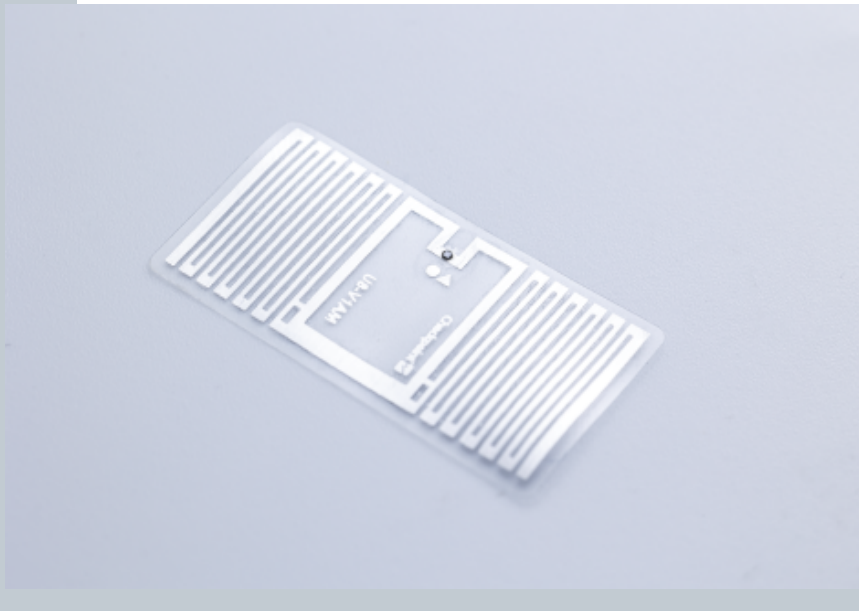
# RFID Inlay Jewel NXP Ucode 8

## Dimensions (WxH)

30 mm X15 mm (1.17 " X 0.585 ")

## DESCRIPTION

Combining a compact size with high read-rate performance, making it ideal for use in retail applications, such as store cycle counts and item visibility. Jewel is ISO18000-6C compliant and can be encoded and printed to carry EPC data in several formats - RFID EPC global protocol, printed bar code and human readable text.



## RFID SPECIFICATIONS

Protocol	ISO/IEC 18000-6C/ EPC Class 1 Gen2
Operating Frequency	860 Mhz - 960 Mhz
Chip Type	Ucode 8
Unique TID / UID	96 bits
EPC Memory	128 Bits
User Memory	0 bits
Tag type	UHF

## INDUSTRIES

Retail Apparel

## APPLICATIONS



Inventory visibility

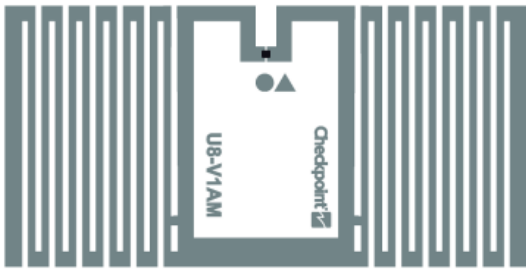


Store processes (Cycle Count /  
item locator / POS)

## ARC CATEGORIES

Spec Q

## OTHER CERTIFICATIONS

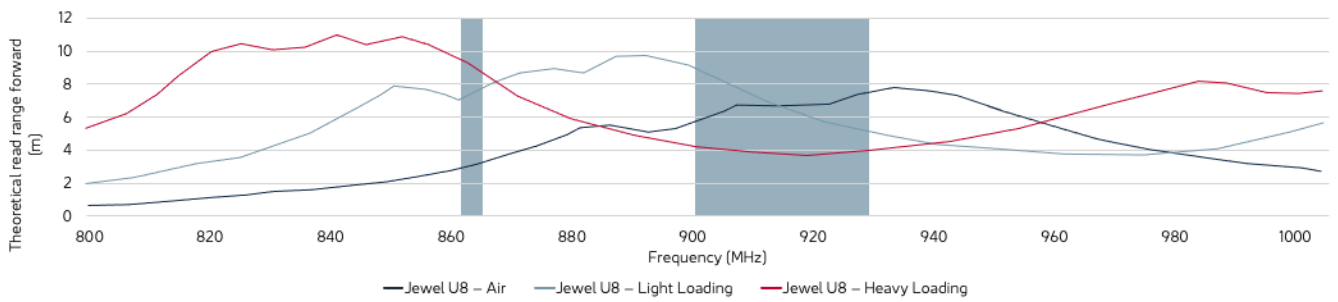


**PERFORMANCE**

ETSI Read Range	8.50 m
FCC Read Range	6.70 m

**READ RANGE**

Free Space, Light, & Heavy Loading Conditions



**ORIENTATION SENSITIVITY**

ETSI

FCC

