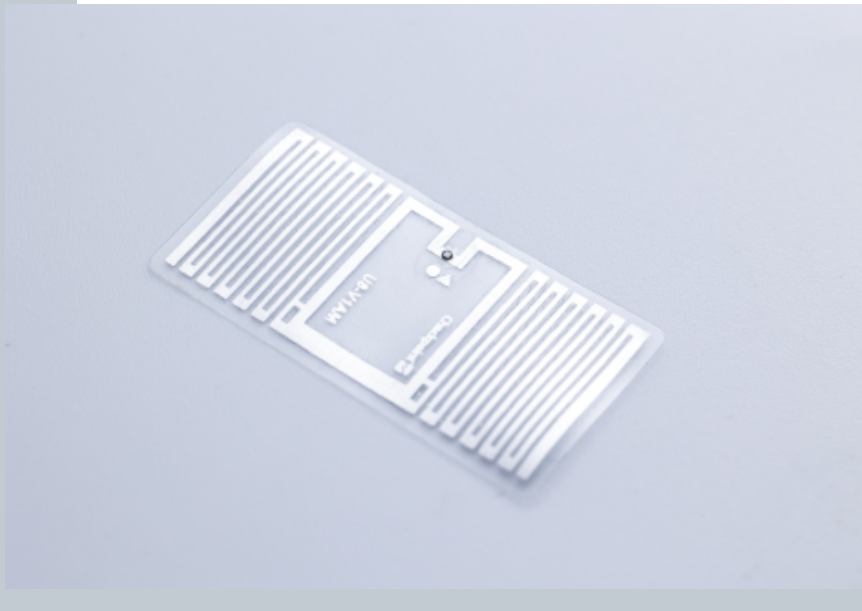


RFID Inlay Jewel NXP Ucode 9

Dimensions (WxH)

30 mm X15 mm (1.17 " X 0.585 ")



DESCRIPTION

Combining a compact size with high read-rate performance, making it ideal for use in retail applications, such as store cycle counts and item visibility. Jewel is ISO18000-6C compliant and can be encoded and printed to carry EPC data in several formats - RFID EPC global protocol, printed bar code and human readable text.

RFID SPECIFICATIONS

Protocol	ISO/IEC 18000-6C/ EPC Class 1 Gen2
Operating Frequency	860 Mhz - 960 Mhz
Chip Type	Ucode 9
Unique TID / UID	96 bits
EPC Memory	96 bits
User Memory	0 bits
Tag type	UHF

INDUSTRIES

Retail Apparel

APPLICATIONS



Inventory visibility



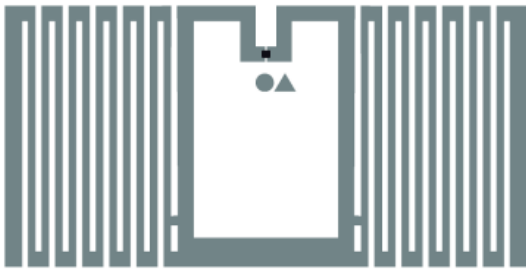
Omnichannel



Store processes (Cycle Count / item locator / POS)

ARC CATEGORIES

OTHER CERTIFICATIONS

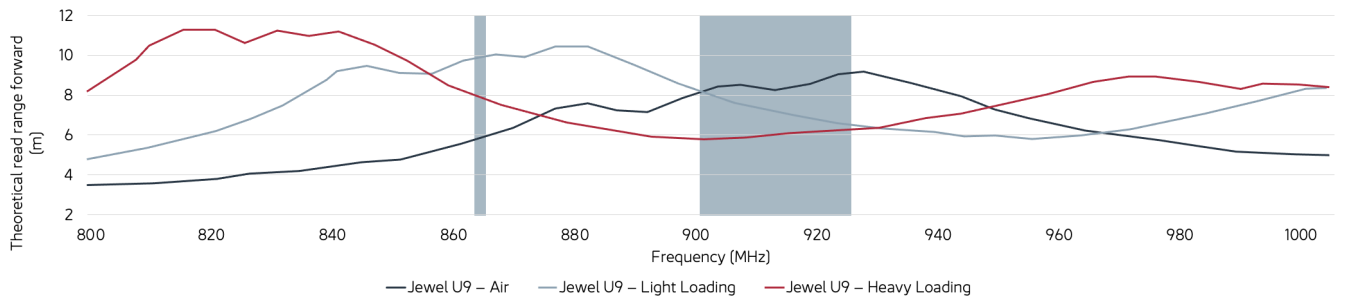


PERFORMANCE

ETSI Read Range	9.60 m
FCC Read Range	5.80 m

READ RANGE

Free Space, Light, & Heavy Loading Conditions



ORIENTATION SENSITIVITY

ETSI

FCC

