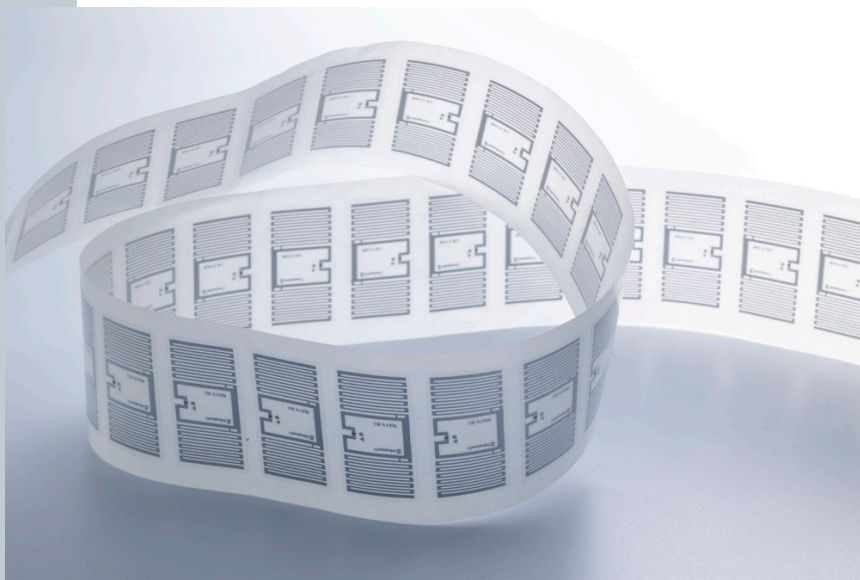


RFID Inlay Jewel Impinj Monza M830

Dimensions (WxH)

30 mm X15 mm (1.17 " X 0.585 ")



DESCRIPTION

Combining a compact size with high read-rate performance, making it ideal for use in retail applications, such as store cycle counts and item visibility. Jewel is ISO18000-6C compliant and can be encoded and printed to carry EPC data in several formats - RFID EPC global protocol, printed bar code and human readable text.

RFID SPECIFICATIONS

Protocol	ISO/IEC 18000-63:2015 and EPCglobal Gen2v2 compliant and supports Impinj Gen2X
Operating Frequency	860 Mhz - 960 Mhz
Chip Type	Monza M830
Unique TID / UID	96 bits
EPC Memory	128 bits
User Memory	No data
Tag type	UHF

INDUSTRIES

General Merchandise	Luxury
Retail Apparel	

APPLICATIONS



Inventory visibility

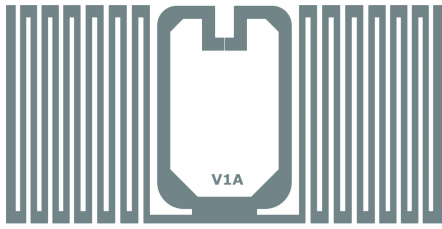


Store processes (Cycle Count / item locator / POS)

ARC CATEGORIES

Spec Q

OTHER CERTIFICATIONS

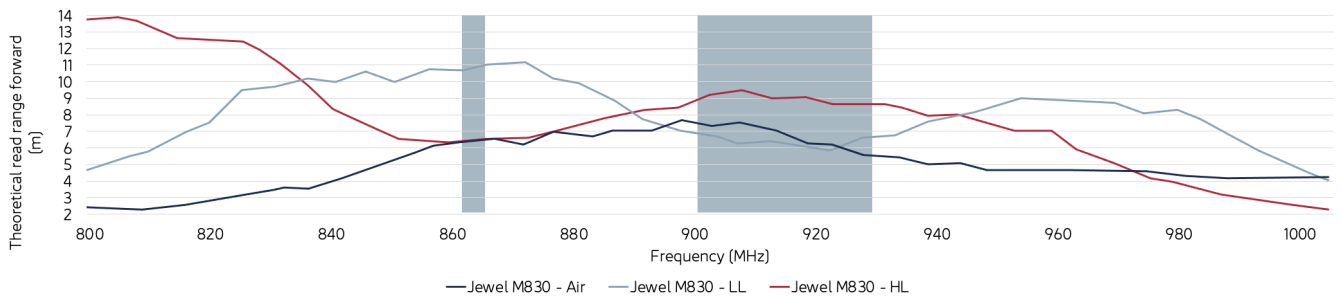


PERFORMANCE

ETSI Read Range	11.00 m
FCC Read Range	6.00 m

READ RANGE

Free Space, Light, & Heavy Loading Conditions



ORIENTATION SENSITIVITY

ETSI

FCC

