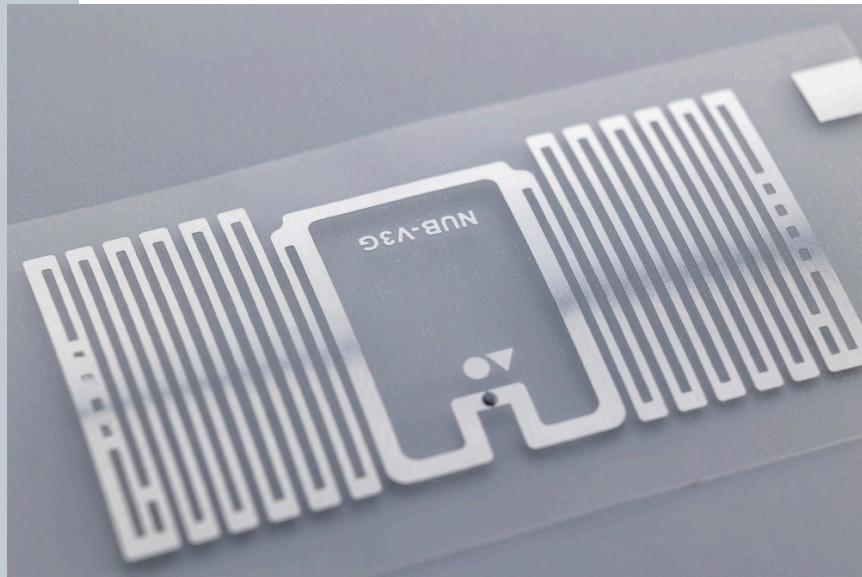


RFID Inlay Jewel NXP UCODE X

Dimensions (WxH)

30 mm X15 mm (1.17 " X 0.585 ")



DESCRIPTION

Combining a compact size with high read-rate performance, making it ideal for use in retail applications, such as store cycle counts and item visibility. Jewel is ISO18000-6C compliant and can be encoded and printed to carry EPC data in several formats - RFID EPC global protocol, printed bar code and human readable text.

RFID SPECIFICATIONS

Protocol	ISO/IEC 18000-6C/ EPC Class 1 Gen2
Operating Frequency	860 Mhz - 960 Mhz
Chip Type	UCODE X
Unique TID / UID	96
EPC Memory	176 to 208
User Memory	0 to 32
Tag type	UHF

INDUSTRIES

General Merchandise Retail Cosmetics

APPLICATIONS



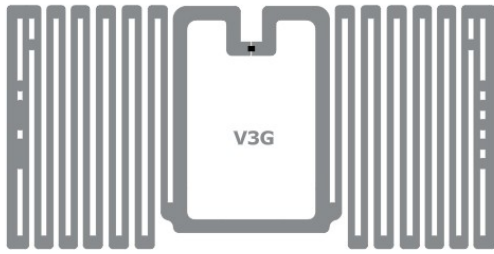
Inventory visibility



Store processes (Cycle Count /
item locator / POS)

ARC CATEGORIES

OTHER CERTIFICATIONS



PERFORMANCE

ETSI Read Range	14.10 m
FCC Read Range	6.70 m

READ RANGE

Free Space, Light, & Heavy Loading Conditions



ORIENTATION SENSITIVITY

ETSI

FCC

