

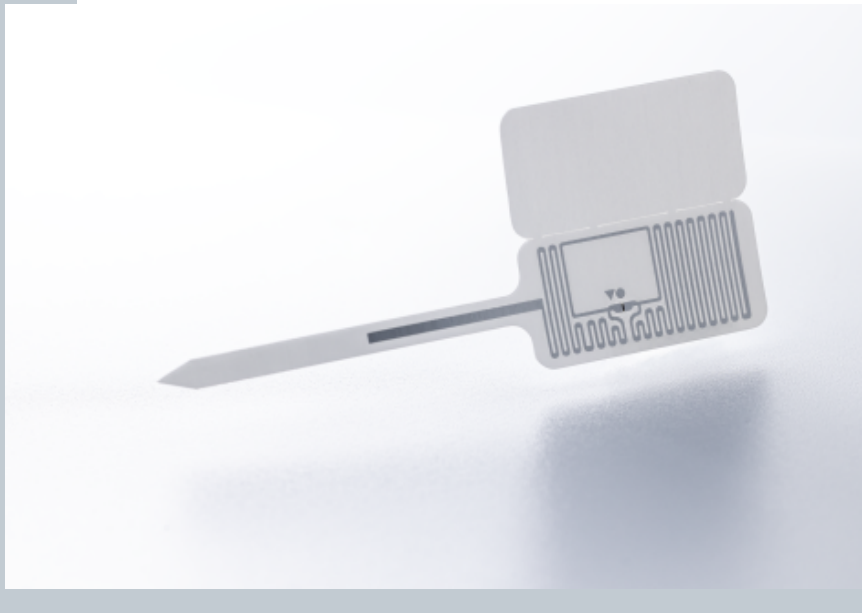
RFID Inlay Kompasu NXP Ucode 9 XE

Dimensions (WxH)

40 mm X 11 mm (1.56 " X 0.429 ")

DESCRIPTION

Developed specifically for eyewear and jewelry retailers, the Kompasu flag tag delivers strong inventory control performance in a compact and discreet design. Unlike other labels on the market, Kompasu provides retailers with a small format label ready to attach to merchandise without compromising on performance or dominating the beauty of the product.



RFID SPECIFICATIONS

Protocol	ISO/IEC 18000-6C/ EPC Class 1 Gen2
Operating Frequency	860 Mhz - 960 Mhz
Chip Type	Ucode 9 XE
Unique TID / UID	96 bits
EPC Memory	128 Bits
User Memory	No data
Tag type	UHF

INDUSTRIES

Luxury Retail Apparel

APPLICATIONS



Anti theft



Inventory visibility



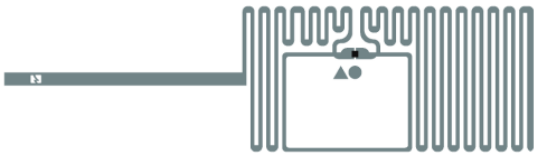
Omnichannel



Store processs (Cycle Count / item locator / POS)

ARC CATEGORIES

OTHER CERTIFICATIONS



PERFORMANCE

ETSI Read Range

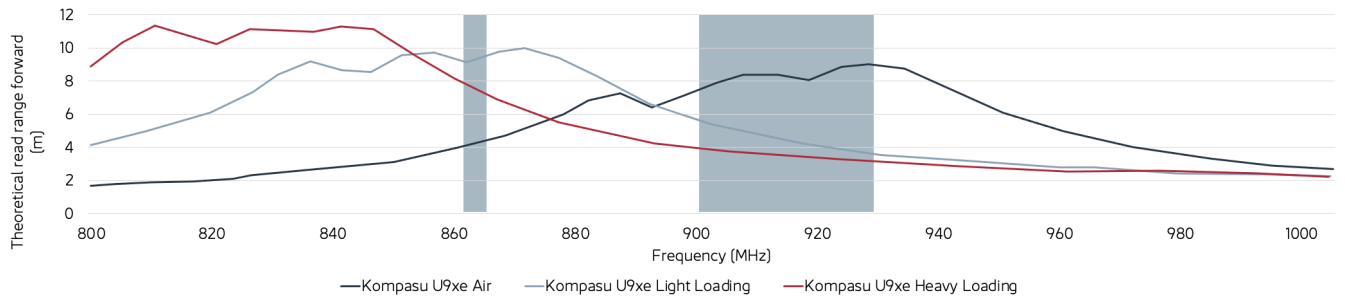
9.90 m

FCC Read Range

4.20 m

READ RANGE

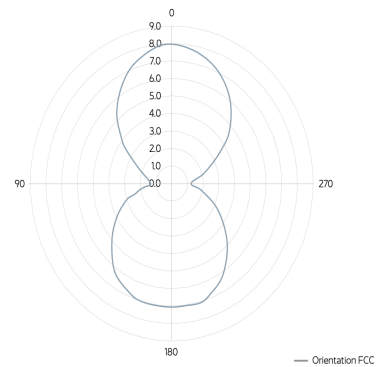
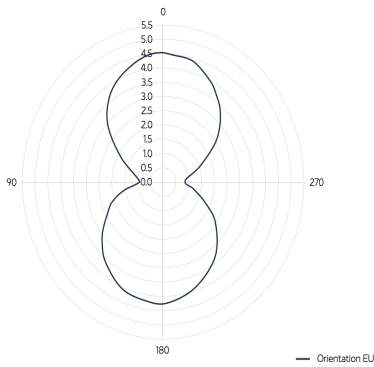
Free Space, Light, & Heavy Loading Conditions



ORIENTATION SENSITIVITY

ETSI

FCC



HANDLING GUIDELINES

Read our handling and best practice [guidelines](#)