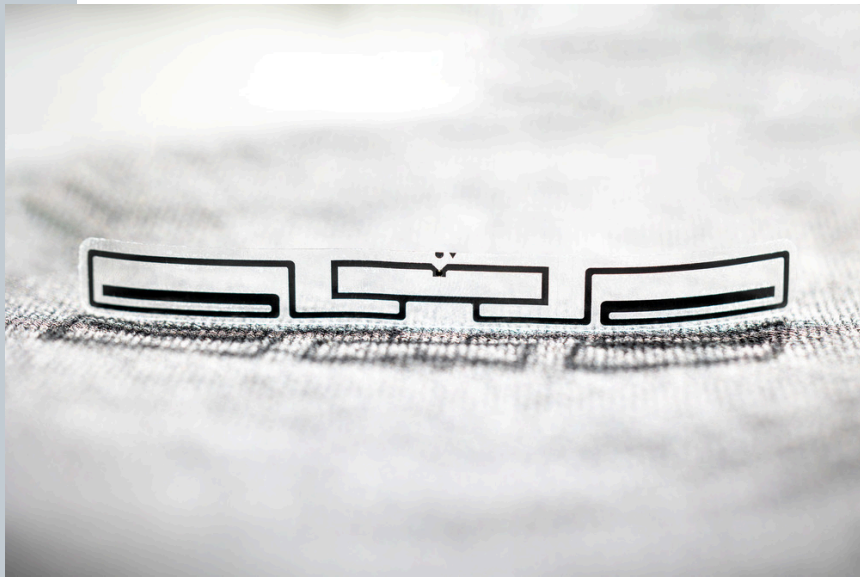




RFID Inlay Kona NXP Ucode 9 XE

Dimensions (WxH)

80 mm X7 mm (3.12 " X 0.273 ")



DESCRIPTION

Kona's slim antenna design allows for strategic, tamper-proof tagging of smaller items such as lingerie, health and cosmetics. High detection rates enables increased item visibility and enhanced security with RFID as EAS uses in retail.

RFID SPECIFICATIONS

Protocol	ISO/IEC 18000-6C/ EPC Class 1 Gen2
Operating Frequency	860 Mhz - 960 Mhz
Chip Type	Ucode 9 XE
Unique TID / UID	96 bits
EPC Memory	128 Bits
User Memory	No data
Tag type	UHF

INDUSTRIES

Logistics	Retail Apparel
Retail Cosmetics	

APPLICATIONS



Anti theft



Asset tracking
- heavy loading



DC inbound
box level



DC Outbound



Inventory
visibility



Library



Omnichannel



Store processes
(Cycle Count /
item locator /
POS)

ARC CATEGORIES

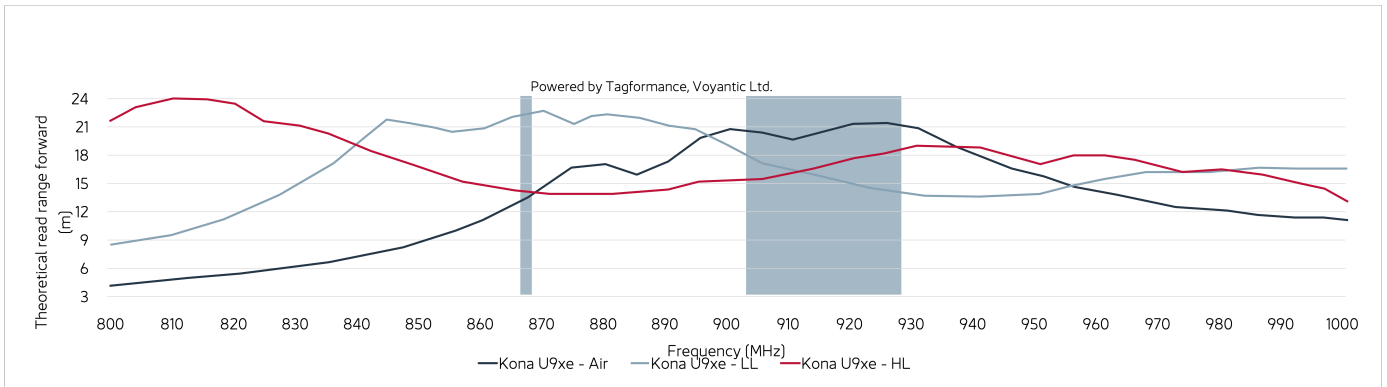
OTHER CERTIFICATIONS



PERFORMANCE	
ETSI Read Range	20.17 m
FCC Read Range	14.15 m

READ RANGE

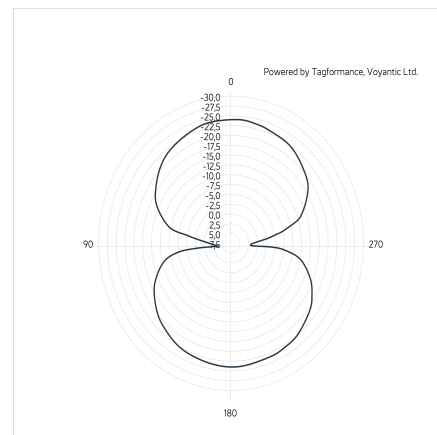
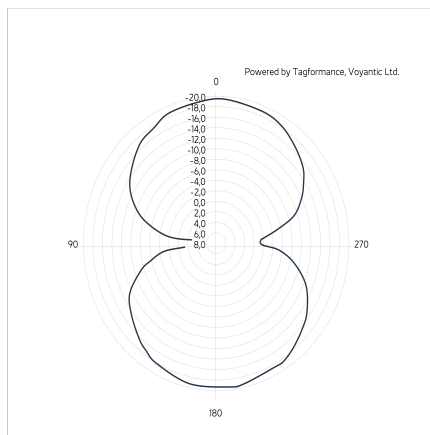
Free Space, Light, & Heavy Loading Conditions



ORIENTATION SENSITIVITY

ETSI

FCC



HANDLING GUIDELINES

Read our handling and best practice [guidelines](#)