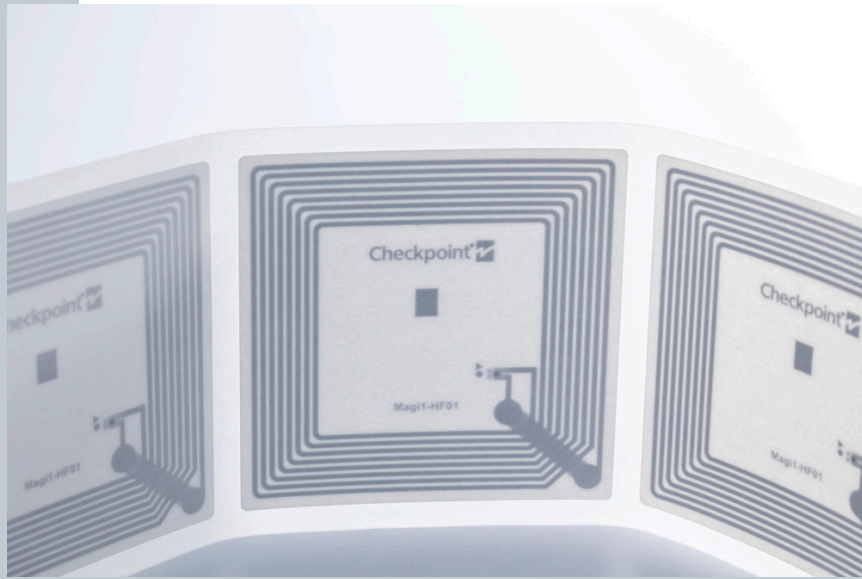


RFID Inlay Magi Cube NXP Icode Slix 2

Dimensions (WxH)

47 mm X47 mm (1.833 " X 1.833 ")



DESCRIPTION

Magi NFC inlays expand our NFC portfolio meeting ISO 15693 Forum 5, developed to meet customer demand for enhanced inventory, logistics, and ID applications and available in both square and rectangular formats. With faster data transfer, multiple operation modes, and dependable performance, it enables smarter asset tracking and versatile integration into smart packaging and connected product ecosystems.

RFID SPECIFICATIONS

Protocol	ISO/IEC 15693, NFC Forum T5T
Operating Frequency	13.56 Mhz
Chip Type	Icode Slix 2
Unique TID / UID	UID 64 bits
EPC Memory	n/a
User Memory	2560 bits user memory, organized in 80 blocks of 4 bytes each (last block reserved for counter feature)
Tag type	NFC

INDUSTRIES

General Merchandise	Retail Apparel
Retail Cosmetics	

APPLICATIONS



Anti theft

Consumer engagement



Inventory visibility



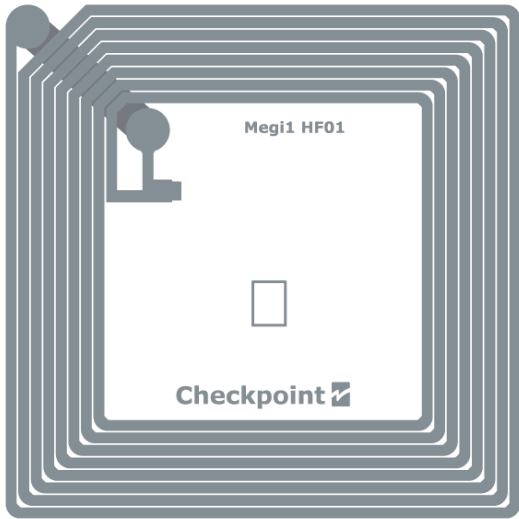
Library



Store processs (Cycle Count / item locator / POS)

ARC CATEGORIES

OTHER CERTIFICATIONS



PERFORMANCE

ETSI Read Range	m
FCC Read Range	m

READ RANGE

Free Space, Light, & Heavy Loading Conditions

ORIENTATION SENSITIVITY

ETSI

FCC

HANDLING GUIDELINES

Read our handling and best practice [guidelines](#)