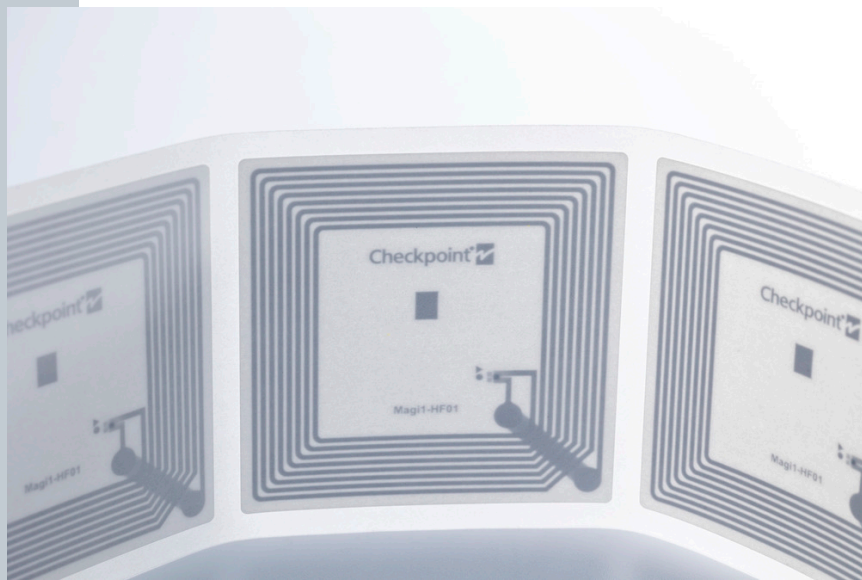


RFID Inlay Magi Cube NXP ICODE 3 23.5uF

Dimensions (WxH)

47 mm X47 mm (1.833 " X 1.833 ")



DESCRIPTION

Magi NFC inlays expand our NFC portfolio meeting ISO 15693 Forum 5, developed to meet customer demand for enhanced inventory, logistics, and ID applications and available in both square and rectangular formats. With faster data transfer, multiple operation modes, and dependable performance, it enables smarter asset tracking and versatile integration into smart packaging and connected product ecosystems.

RFID SPECIFICATIONS

Protocol	ISO/IEC 15693
Operating Frequency	13.56 MHz
Chip Type	ICODE 3 23.5uF
Unique TID / UID	UID 64 bits
EPC Memory	N/A
User Memory	2432 bits of user memory organized in 76 blocks of 4 bytes each.
Tag type	NFC

INDUSTRIES

General Merchandise Retail Cosmetics

APPLICATIONS



Anti theft

Consumer engagement



Inventory visibility



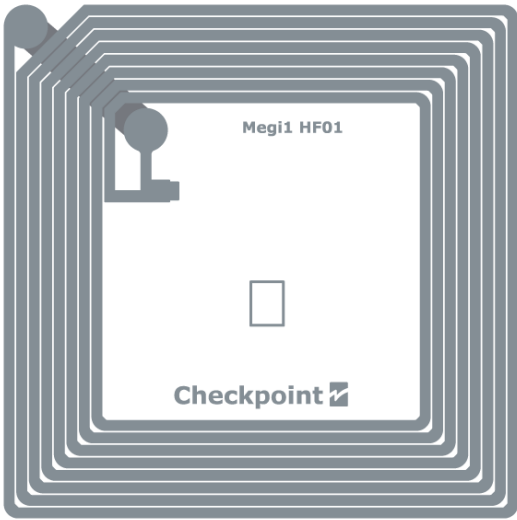
Library



Store processes (Cycle Count / item locator / POS)

ARC CATEGORIES

OTHER CERTIFICATIONS



PERFORMANCE

ETSI Read Range	m
FCC Read Range	m

READ RANGE

Free Space, Light, & Heavy Loading Conditions

ORIENTATION SENSITIVITY

ETSI

FCC

HANDLING GUIDELINES

Read our handling and best practice [guidelines](#)