

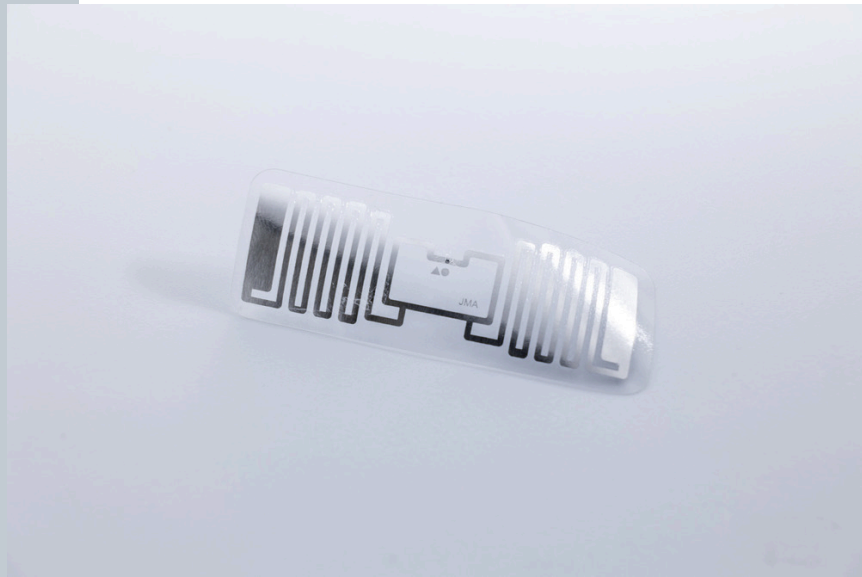
RFID Inlay Marin Impinj Monza M830

Dimensions (WxH)

48 mm X15 mm (1.872 " X 0.585 ")

DESCRIPTION

Marin is a versatile, compact RFID inlay built for overhead readers, ensuring strong performance across US and EU systems. Meeting key retail ARC specs, it's ideal for garment embedding and diverse packaging. Equipped with the latest M800 series RFID chips.



RFID SPECIFICATIONS

Protocol	ISO/IEC 18000-63:2015 and EPCglobal Gen2v2 compliant and supports Impinj Gen2X
Operating Frequency	860 Mhz - 960 Mhz
Chip Type	Monza M830
Unique TID / UID	96 bits
EPC Memory	128 bits
User Memory	No data
Tag type	UHF

INDUSTRIES

General Merchandise	Luxury
Retail Apparel	Retail Cosmetics

APPLICATIONS



Anti theft



Inventory visibility



Library



Omnichannel



Store process (Cycle Count / item locator / POS)

ARC CATEGORIES

Spec R	Spec I	Spec O
Spec F	Spec I and F	SPEC Y2
Spec Q	Spec W5	Spec L
Spec W6		

OTHER CERTIFICATIONS

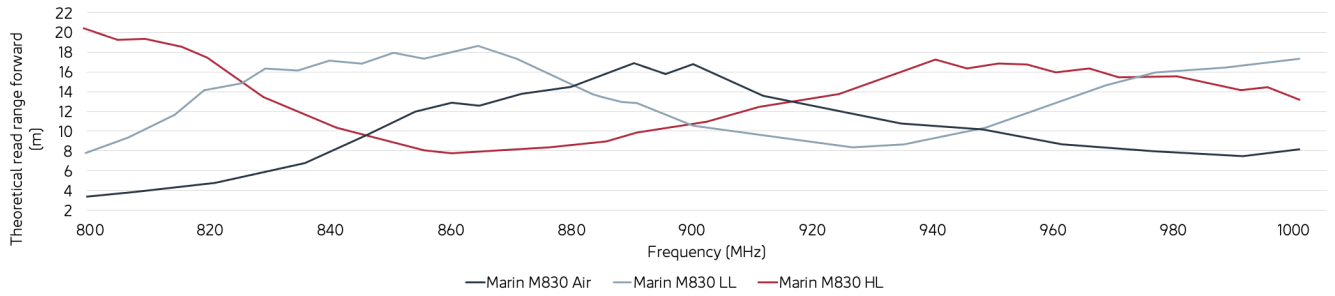


PERFORMANCE

ETSI Read Range	18.60 m
FCC Read Range	9.40 m

READ RANGE

Free Space, Light, & Heavy Loading Conditions



ORIENTATION SENSITIVITY

ETSI

FCC

