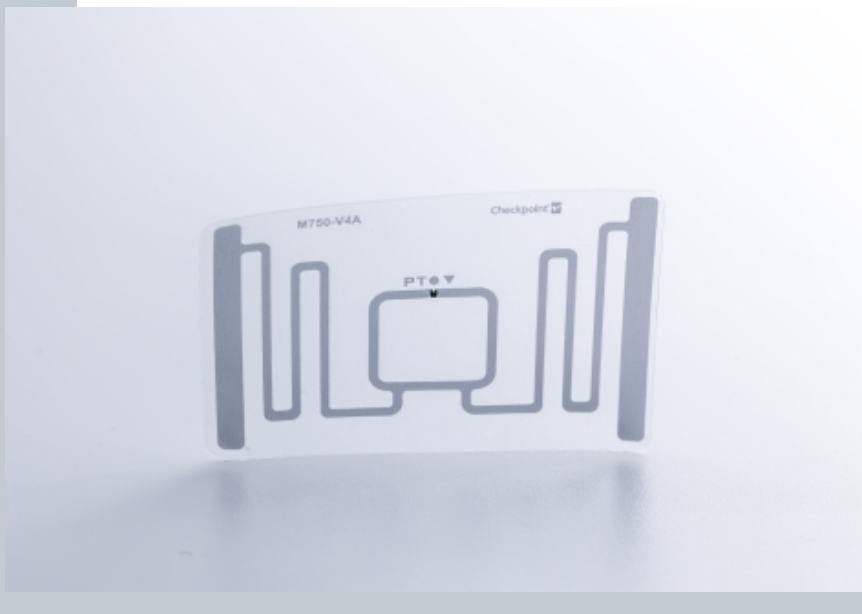


# RFID Inlay Mistral Impinj Monza M730

**Dimensions (WxH)**

44 mm X28 mm (1.716 " X 1.092 ")



**DESCRIPTION**

Mistral combines a small antenna footprint with strong RFID performance for retail labeling applications, such as inventory control and RFID as EAS. Using ISO18000-6C protocol, Mistral can be encoded to carry EPC item level data, printed with barcode and human readable text or fully integrated into packaging and trim items such as hangtags or pocket tags.

**RFID SPECIFICATIONS**

Protocol	ISO/IEC 18000-63:2015 and EPC global Gen2v2 compliant. It also supports Impinj Gen2X
Operating Frequency	860 Mhz - 960 Mhz
Chip Type	Monza M730
Unique TID / UID	96 bits
EPC Memory	128 bits
User Memory	0 bits
Tag type	UHF

**INDUSTRIES**

Retail Apparel

**APPLICATIONS**



Anti theft



Inventory visibility



Omnichannel



Store processes (Cycle Count / item locator / POS)

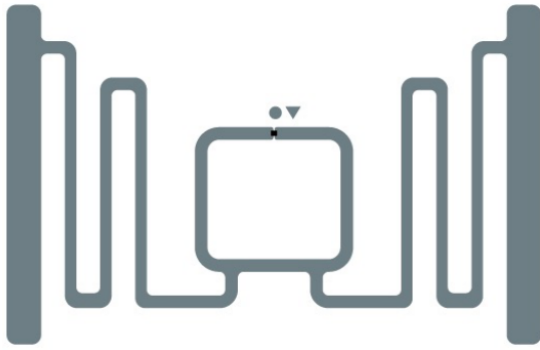
**ARC CATEGORIES**

Spec I  
Spec L

Spec Q

Spec W5

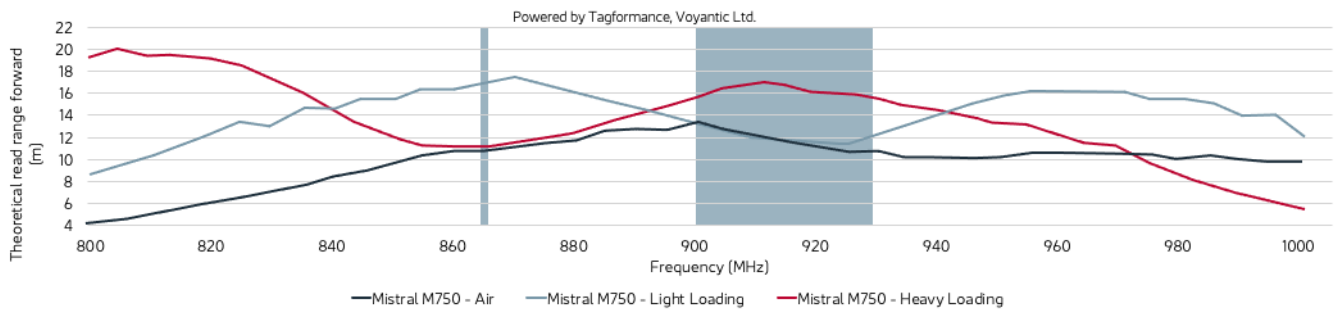
**OTHER CERTIFICATIONS**



PERFORMANCE	
ETSI Read Range	14.80 m
FCC Read Range	10.40 m

## READ RANGE

Free Space, Light, & Heavy Loading Conditions



## ORIENTATION SENSITIVITY

ETSI

FCC

