

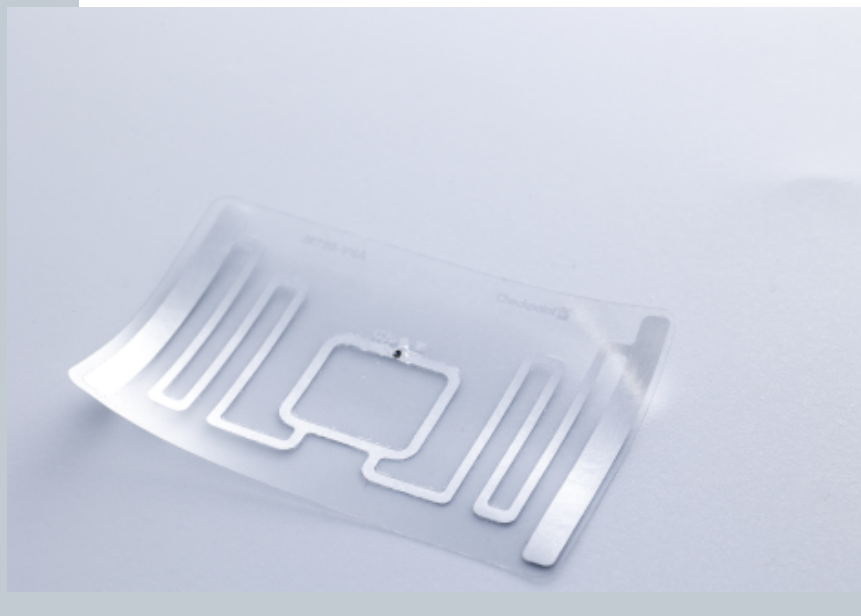
# RFID Inlay Mistral Impinj Monza M750

## Dimensions (WxH)

44 mm X28 mm (1.716 " X 1.092 ")

## DESCRIPTION

Mistral combines a small antenna footprint with strong RFID performance for retail labeling applications, such as inventory control and RFID as EAS. Using ISO18000-6C protocol, Mistral can be encoded to carry EPC item level data, printed with barcode and human readable text or fully integrated into packaging and trim items such as hangtags or pocket tags.



## RFID SPECIFICATIONS

Protocol	ISO/IEC 18000-63:2015 and EPC global Gen2v2 compliant. It also supports Impinj Gen2X
Operating Frequency	860 Mhz - 960 Mhz
Chip Type	Monza M750
Unique TID / UID	96 bits
EPC Memory	96 bits
User Memory	32 bits
Tag type	UHF

## INDUSTRIES

Retail Apparel

## APPLICATIONS



Inventory visibility



Omnichannel



Store processes (Cycle Count / item locator / POS)

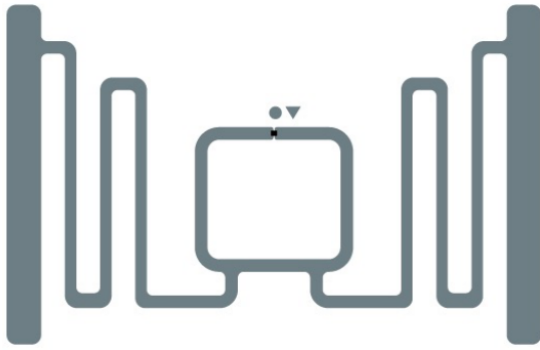
## ARC CATEGORIES

Spec I and F  
Spec W5

Spec Q  
Spec I

Spec L  
Spec F

## OTHER CERTIFICATIONS

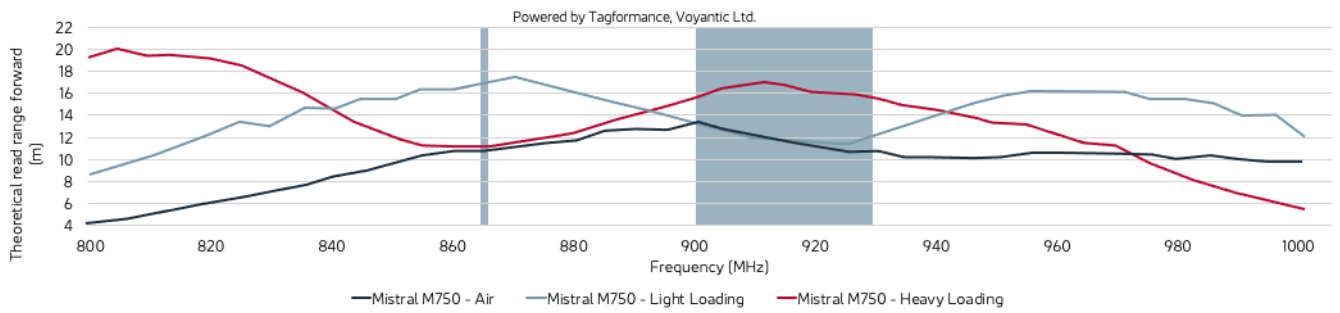


## PERFORMANCE

ETSI Read Range	14.80 m
FCC Read Range	10.40 m

## READ RANGE

Free Space, Light, & Heavy Loading Conditions



## ORIENTATION SENSITIVITY

ETSI

FCC

