

# RFID Inlay Spiro Plus Impinj Monza M750

## Dimensions (WxH)

26 mm X14 mm (1.014 " X 0.546 ")

## DESCRIPTION

Designed specifically for use in medical and healthcare environments, the Spiro Plus label can be applied to pharmaceutical products and packaging at the point of manufacture, enabling them to be tracked throughout the supply chain. RFID in healthcare applications allows for the modernization of processes including restocking, saving them from redundant drug spend and ensuring patient safety with accurate data on history, recalls and expiration dates.

## RFID SPECIFICATIONS

Protocol	ISO/IEC 18000-63:2015 and EPC global Gen2v2 compliant. It also supports Impinj Gen2X
Operating Frequency	860 Mhz - 960 Mhz
Chip Type	Monza M750
Unique TID / UID	96 bits
EPC Memory	96 bits
User Memory	32 bits
Tag type	UHF

## INDUSTRIES

Healthcare

## APPLICATIONS



Inventory visibility

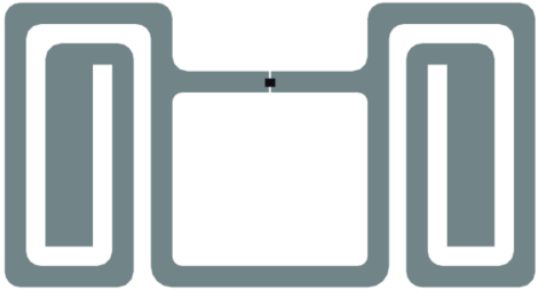


Store processes (Cycle Count /  
item locator / POS)

## ARC CATEGORIES

Spec S

## OTHER CERTIFICATIONS

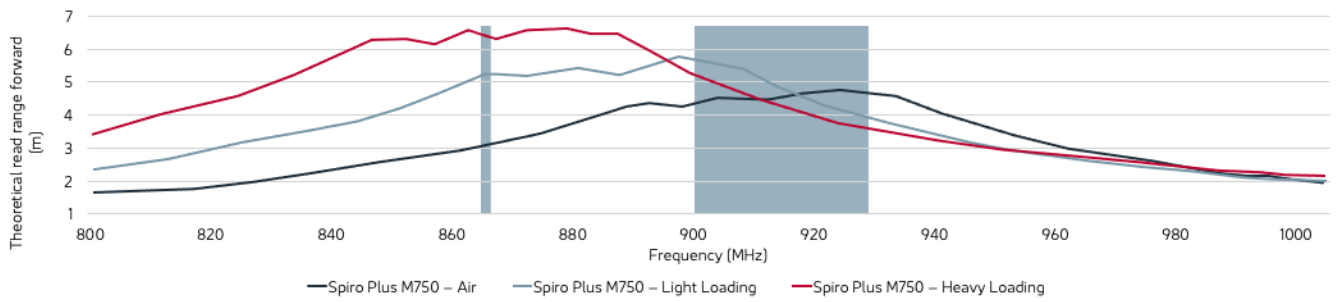


**PERFORMANCE**

ETSI Read Range	5.20 m
FCC Read Range	4.50 m

**READ RANGE**

Free Space, Light, & Heavy Loading Conditions



**ORIENTATION SENSITIVITY**

ETSI

FCC

