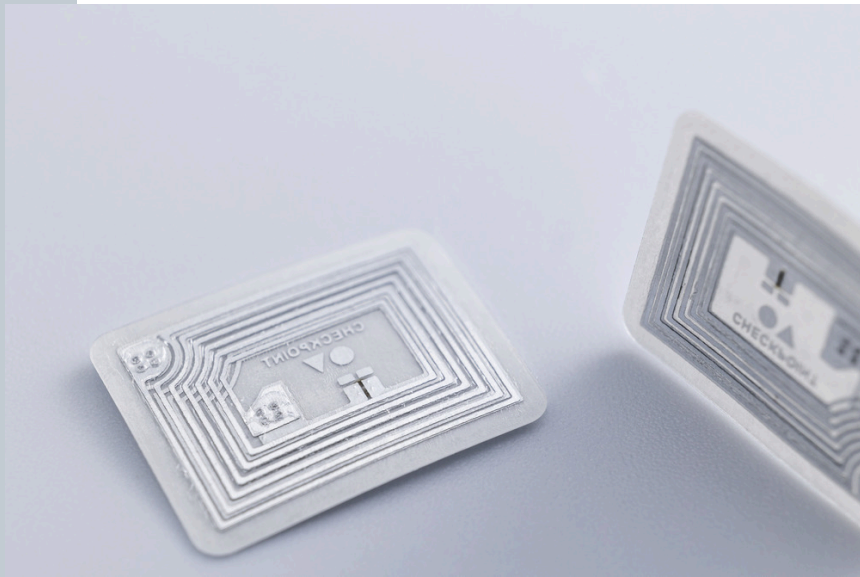


# RFID Inlay Squall NXP Ntag 213

**Dimensions (WxH)**

10 mm X13 mm (0.39 “ X 0.507 “)



**DESCRIPTION**

The Squall NFC inlay features a compact, adaptable design ideal for a range of applications, including the beverage industry. Its small footprint allows for flexible placement on various product types, while support for multiple NFC chip options ensures compatibility and performance tailored to specific use cases.

**RFID SPECIFICATIONS**

Protocol	ISO/IEC 14443A 1-3, NFC Forum T2T
Operating Frequency	13.56 Mhz
Chip Type	Ntag 213
Unique TID / UID	UID 7 byte
EPC Memory	n/a
User Memory	144 bytes freely available user Read/Write area (36 pages)
Tag type	NFC

**INDUSTRIES**

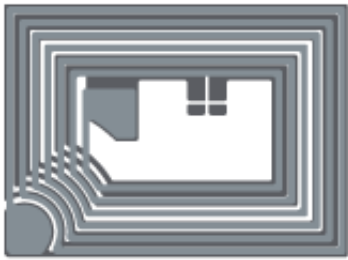
General Merchandise	Logistics
Retail Apparel	Retail Cosmetics
Retail Food	

**APPLICATIONS**

Consumer engagement

**ARC CATEGORIES**

**OTHER CERTIFICATIONS**



## PERFORMANCE

ETSI Read Range

m

FCC Read Range

m

## READ RANGE

Free Space, Light, & Heavy Loading Conditions

## ORIENTATION SENSITIVITY

ETSI

FCC

## HANDLING GUIDELINES

Read our handling and best practice [guidelines](#)