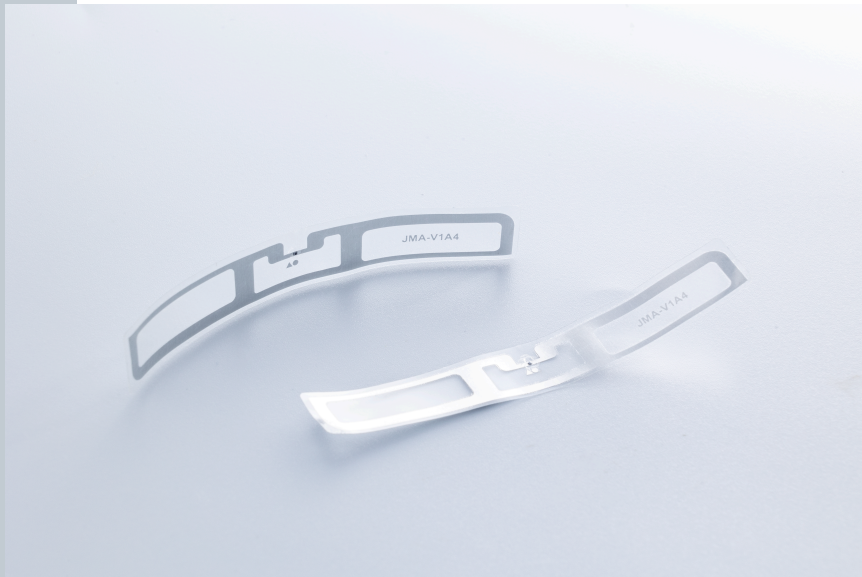


RFID Inlay Taurus NXP Ucode 9 XE

Dimensions (WxH)

70 mm X9 mm (2.73 " X 0.351 ")



DESCRIPTION

Taurus is a custom designed RFID inlay specifically for the cosmetics and retail market, with a compact and narrow design perfectly suited for integrating in common packaging types and sizes. Featuring a high read rate and performance for its size, Taurus is a perfect fit for inventory control and loss prevention applications.

RFID SPECIFICATIONS

Protocol	ISO/IEC 18000-6C/ EPC Class 1 Gen2
Operating Frequency	860 Mhz - 960 Mhz
Chip Type	Ucode 9 XE
Unique TID / UID	96 bits
EPC Memory	128 Bits
User Memory	No data
Tag type	UHF

INDUSTRIES

Retail Cosmetics

APPLICATIONS



Inventory visibility



Omnichannel



Store processes (Cycle Count / item locator / POS)

ARC CATEGORIES

C2

Spec Q

OTHER CERTIFICATIONS



PERFORMANCE

ETSI Read Range

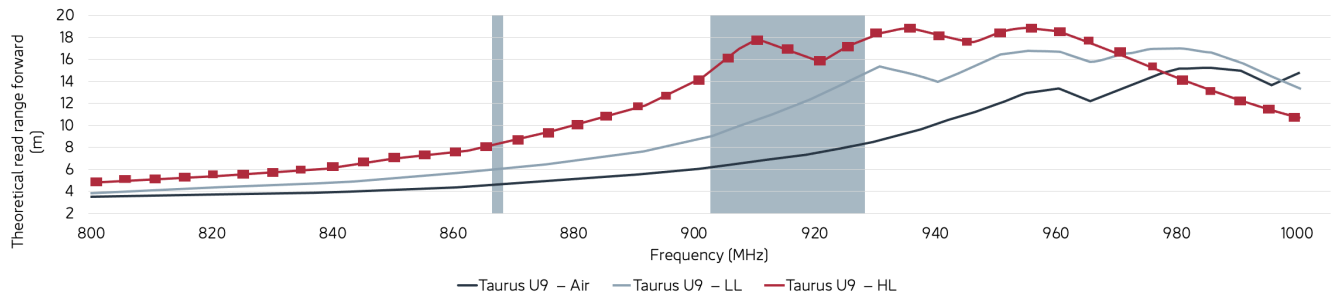
4.30 m

FCC Read Range

10.50 m

READ RANGE

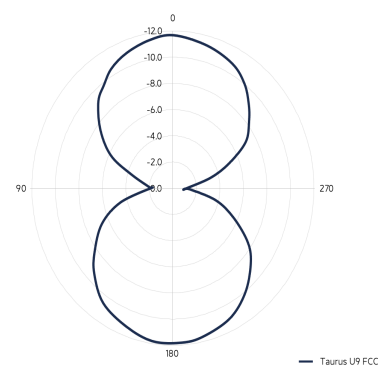
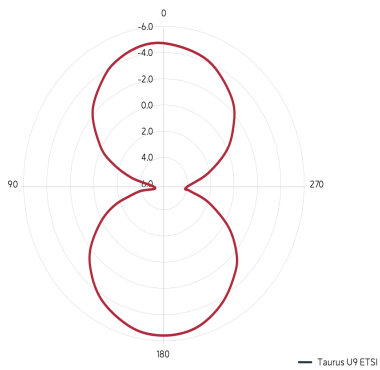
Free Space, Light, & Heavy Loading Conditions



ORIENTATION SENSITIVITY

ETSI

FCC



HANDLING GUIDELINES

Read our handling and best practice [guidelines](#)