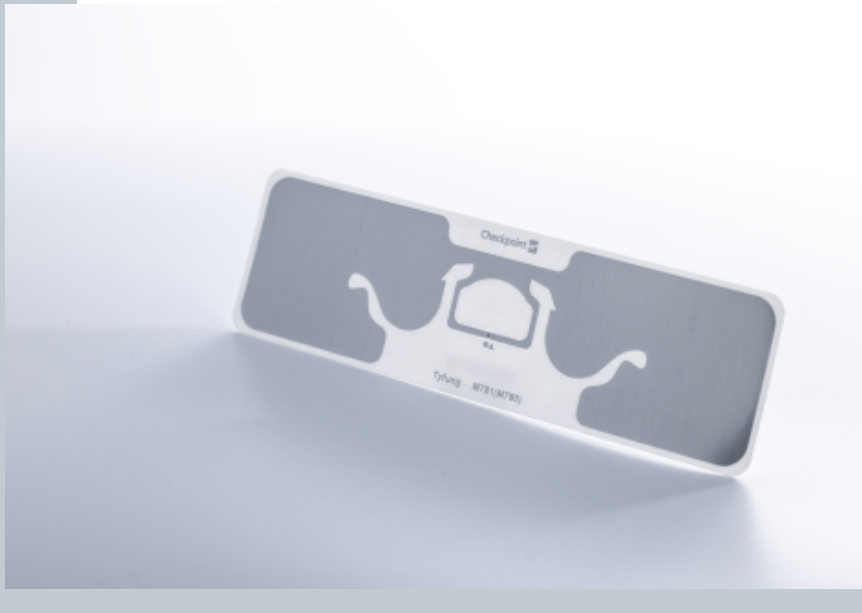


# RFID Inlay Tyfung NXP Ucode 9

**Dimensions (WxH)**

96 mm X26 mm (3.744 " X 1.014 ")



**DESCRIPTION**

Developed to offer the logistics industry a strong RFID label design with outstanding performance, the Tyfung inlay combines a high read range (18-20 meters) and low sensitivity, making it ideal for use in the industrial sector and through the supply chain, as well as traditional retail applications. Capable of storing large amounts of information with its 128 bit EPC memory bank and extra 512 bit user memory bank, the inlay is capable of both complex and extensive encoding, making it one of the most versatile and reliable inlays in our portfolio.

**RFID SPECIFICATIONS**

Protocol	ISO/IEC 18000-6C/ EPC Class 1 Gen2
Operating Frequency	860 Mhz - 960 Mhz
Chip Type	Ucode 9
Unique TID / UID	96 bits
EPC Memory	96 bits
User Memory	0 bits
Tag type	UHF

**INDUSTRIES**

- Logistics
- Retail Apparel
- Retail Food

**APPLICATIONS**



Anti theft



Asset tracking - heavy loading



DC inbound box level



DC Outbound



Inventory visibility



Omnichannel



Store process (Cycle Count / item locator / POS)

**ARC CATEGORIES**

Spec R	Spec I	Spec F
Spec I and F	Spec Q	Spec Z
Spec W5	Spec L	Spec W6
Spec O	SPEC Y2	

**OTHER CERTIFICATIONS**

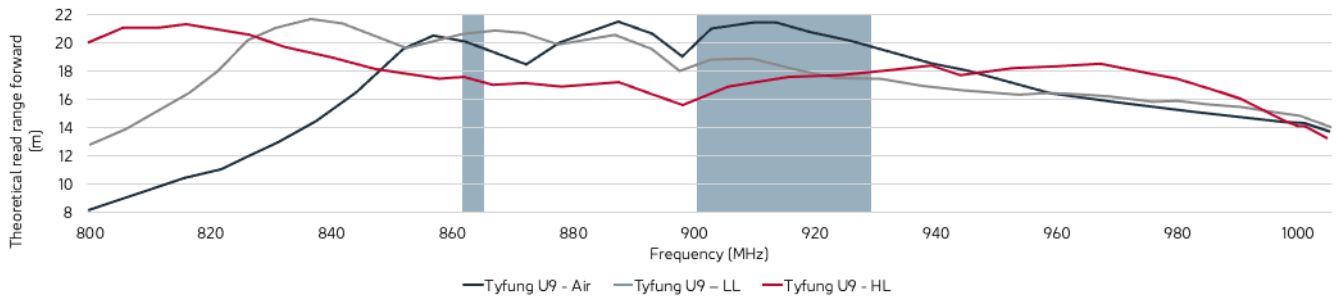


**PERFORMANCE**

ETSI Read Range	20.70 m
FCC Read Range	17.90 m

**READ RANGE**

Free Space, Light, & Heavy Loading Conditions



**ORIENTATION SENSITIVITY**

ETSI

FCC

