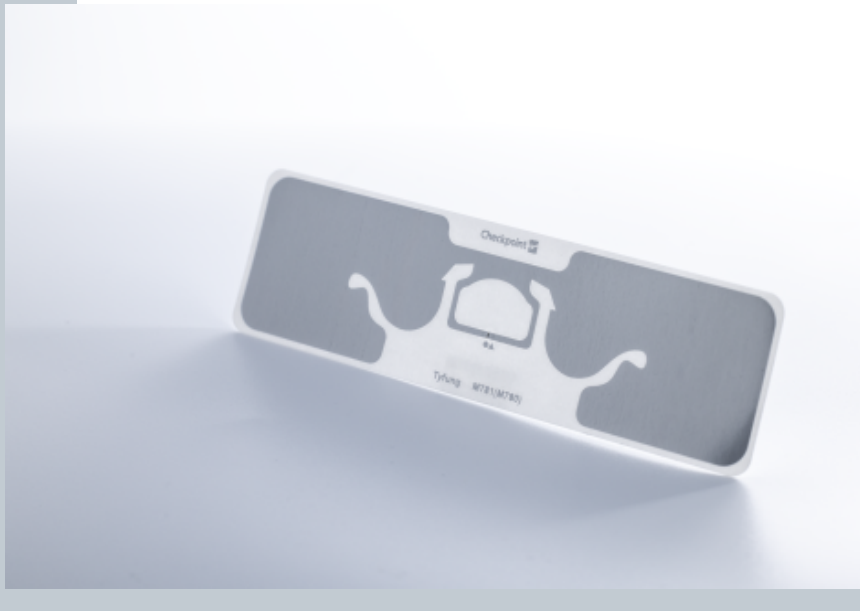


RFID Inlay Tyfung NXP Ucode 9 XE

Dimensions (WxH)

96 mm X26 mm (3.744 " X 1.014 ")



DESCRIPTION

Developed to offer the logistics industry a strong RFID label design with outstanding performance, the Tyfung inlay combines a high read range (18-20 meters) and low sensitivity, making it ideal for use in the industrial sector and through the supply chain, as well as traditional retail applications. Capable of storing large amounts of information with its 128 bit EPC memory bank and extra 512 bit user memory bank, the inlay is capable of both complex and extensive encoding, making it one of the most versatile and reliable inlays in our portfolio.

RFID SPECIFICATIONS

| | |
|---------------------|------------------------------------|
| Protocol | ISO/IEC 18000-6C/ EPC Class 1 Gen2 |
| Operating Frequency | 860 Mhz - 960 Mhz |
| Chip Type | Ucode 9 XE |
| Unique TID / UID | 96 bits |
| EPC Memory | 128 Bits |
| User Memory | No data |
| Tag type | UHF |

INDUSTRIES

| | |
|-------------|----------------|
| Logistics | Retail Apparel |
| Retail Food | |

APPLICATIONS



Anti theft



Asset tracking - heavy loading



DC inbound box level



DC Outbound



Inventory visibility



Omnichannel



Store process (Cycle Count / item locator / POS)

ARC CATEGORIES

| | | |
|---------|--------------|---------|
| Spec R | Spec I | Spec O |
| Spec F | Spec I and F | SPEC Y2 |
| Spec Z | Spec W5 | Spec L |
| Spec W6 | | |

OTHER CERTIFICATIONS

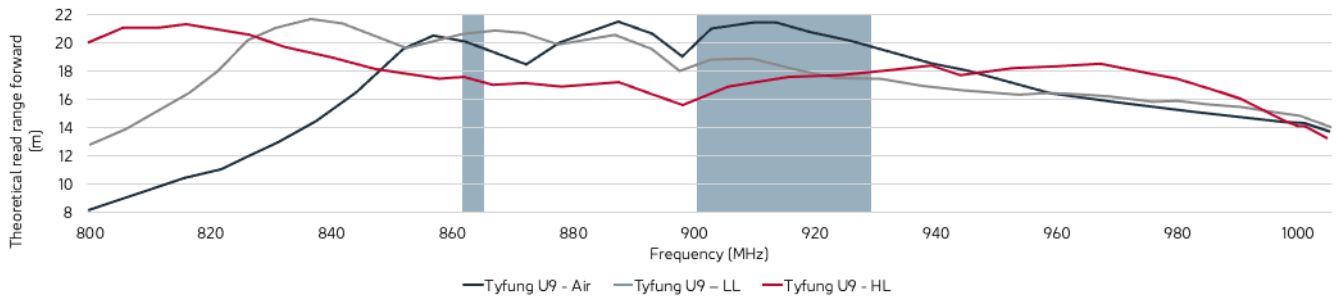


PERFORMANCE

| | |
|-----------------|---------|
| ETSI Read Range | 20.70 m |
| FCC Read Range | 17.90 m |

READ RANGE

Free Space, Light, & Heavy Loading Conditions



ORIENTATION SENSITIVITY

ETSI

FCC

