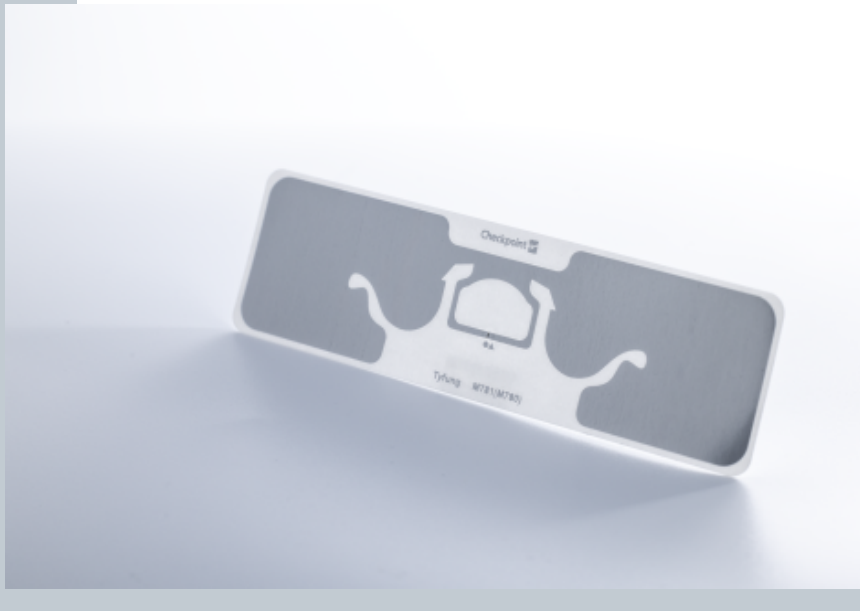


# RFID Inlay Tyfung Impinj Monza M850

## Dimensions (WxH)

96 mm X26 mm (3.744 " X 1.014 ")



## DESCRIPTION

Developed to offer the logistics industry a strong RFID label design with outstanding performance, the Tyfung inlay combines a high read range (18-20 meters) and low sensitivity, making it ideal for use in the industrial sector and through the supply chain, as well as traditional retail applications. Capable of storing large amounts of information with its 128 bit EPC memory bank and extra 512 bit user memory bank, the inlay is capable of both complex and extensive encoding, making it one of the most versatile and reliable inlays in our portfolio.

## RFID SPECIFICATIONS

Protocol	ISO/IEC 18000-63:2015 and EPCglobal Gen2v2 compliant and supports Impinj Gen2X
Operating Frequency	860 Mhz - 960 Mhz
Chip Type	Monza M850
Unique TID / UID	96 bits
EPC Memory	96 bits
User Memory	32 bits
Tag type	UHF

## INDUSTRIES

Logistics	Retail Apparel
Retail Food	

## APPLICATIONS



Anti theft



Asset tracking - heavy loading



DC inbound box level



DC Outbound



Inventory visibility



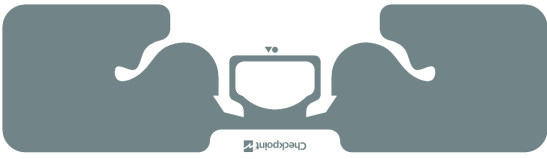
Omnichannel



Store process (Cycle Count / item locator / POS)

## ARC CATEGORIES

## OTHER CERTIFICATIONS

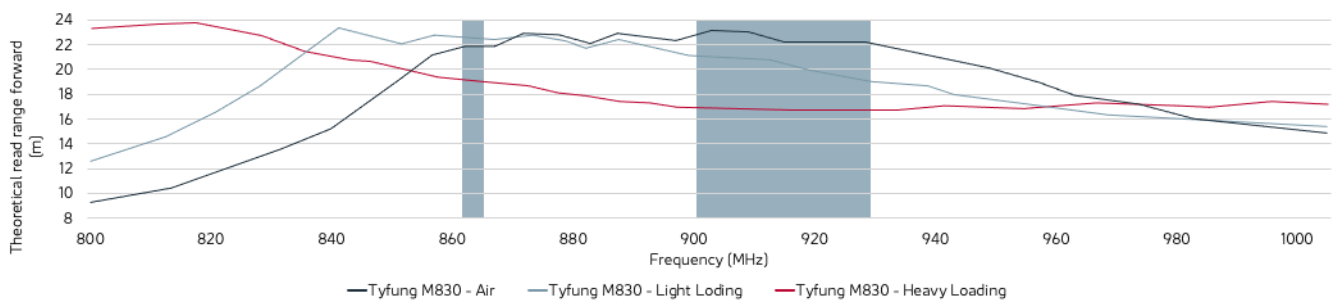


## PERFORMANCE

ETSI Read Range	22.40 m
FCC Read Range	20.10 m

## READ RANGE

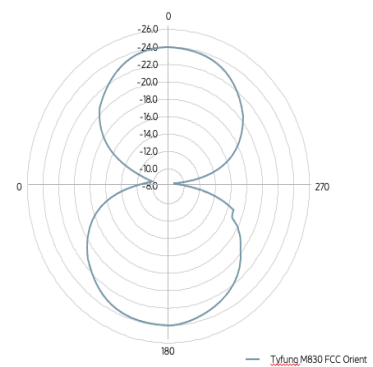
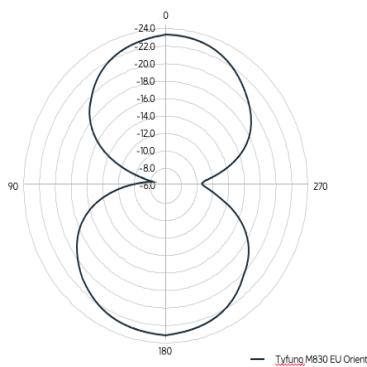
Free Space, Light, & Heavy Loading Conditions



## ORIENTATION SENSITIVITY

ETSI

FCC



## HANDLING GUIDELINES

Read our handling and best practice [guidelines](#)