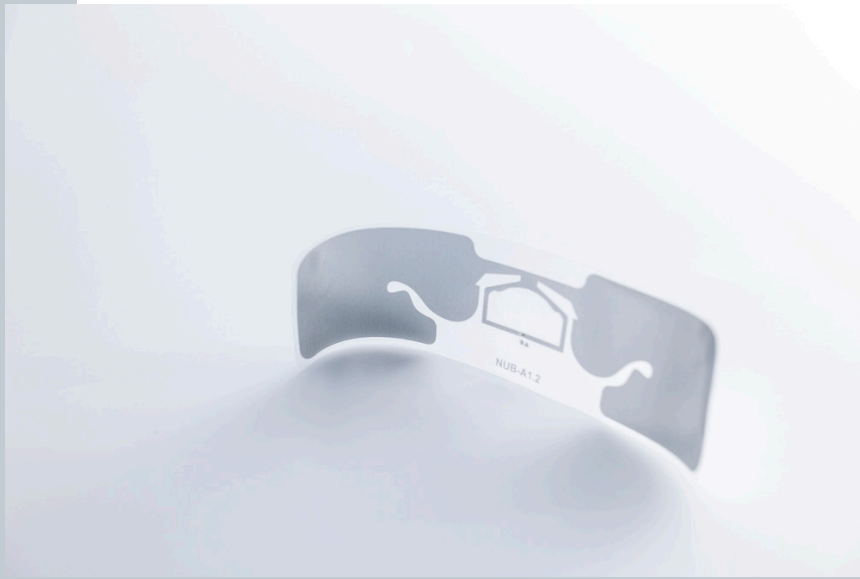


RFID Inlay Tyfung NXP UCODE X

Dimensions (WxH)

96 mm X26 mm (3.744 " X 1.014 ")



DESCRIPTION

Developed to offer the logistics industry a strong RFID label design with outstanding performance, the Tyfung inlay combines a high read range (18-20 meters) and low sensitivity, making it ideal for use in the industrial sector and through the supply chain, as well as traditional retail applications. Capable of storing large amounts of information with its 128 bit EPC memory bank and extra 512 bit user memory bank, the inlay is capable of both complex and extensive encoding, making it one of the most versatile and reliable inlays in our portfolio.

RFID SPECIFICATIONS

Protocol	ISO/IEC 18000-6C/ EPC Class 1 Gen2
Operating Frequency	860 Mhz - 960 Mhz
Chip Type	UCODE X
Unique TID / UID	96
EPC Memory	176 to 208
User Memory	0 to 32
Tag type	UHF

INDUSTRIES

Logistics	Retail Apparel
Retail Food	

APPLICATIONS



Anti theft



Asset tracking - heavy loading



DC inbound box level



DC Outbound



Inventory visibility



Omnichannel



Store process (Cycle Count / item locator / POS)

ARC CATEGORIES

Spec L	Spec W6	Spec H
Spec R	Spec I	Spec O
C2	Spec F	Spec I and F
SPEC Y2	Spec Q	Spec Z
Spec W5		

OTHER CERTIFICATIONS

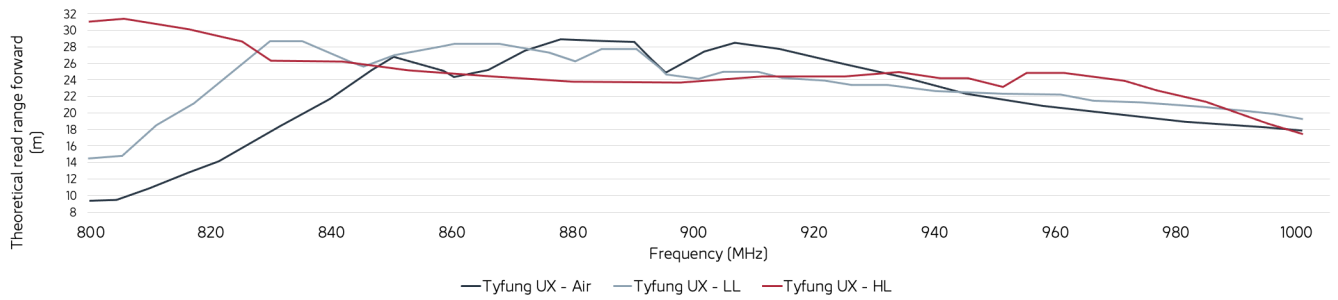


PERFORMANCE

ETSI Read Range	28.30 m
FCC Read Range	24.20 m

READ RANGE

Free Space, Light, & Heavy Loading Conditions



ORIENTATION SENSITIVITY

ETSI

FCC

