

# RFID Inlay Vortex Impinj Monza M730

**Dimensions (WxH)**

42 mm X16 mm (1.638 " X 0.624 ")



**DESCRIPTION**

Vortex is Checkpoint’s top-selling RFID inlay with a proven record of success amongst leading brands. With a small and efficient design, Vortex combines outstanding performance with versatility, being easily integrated into a wide range of products. An inlay of choice for merchandise visibility applications across a range of industries and sectors, Vortex is ISO1800-6C compliant and can be encoded and printed to carry EPC data in several formats including RFID EPC global protocol, printed bar code and human readable text.

**RFID SPECIFICATIONS**

Protocol	ISO/IEC 18000-63:2015 and EPC global Gen2v2 compliant. It also supports Impinj Gen2X
Operating Frequency	860 Mhz - 960 Mhz
Chip Type	Monza M730
Unique TID / UID	96 bits
EPC Memory	128 bits
User Memory	0 bits
Tag type	UHF

**INDUSTRIES**

Retail Apparel                      Retail Cosmetics

**APPLICATIONS**



Inventory visibility



Omnichannel



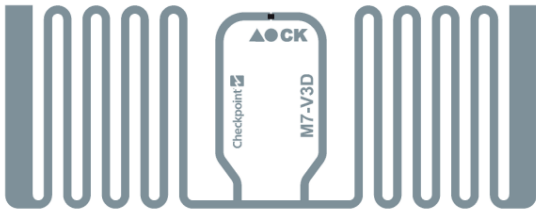
Store processes (Cycle Count / item locator / POS)

**ARC CATEGORIES**

Spec I

Spec Q

**OTHER CERTIFICATIONS**

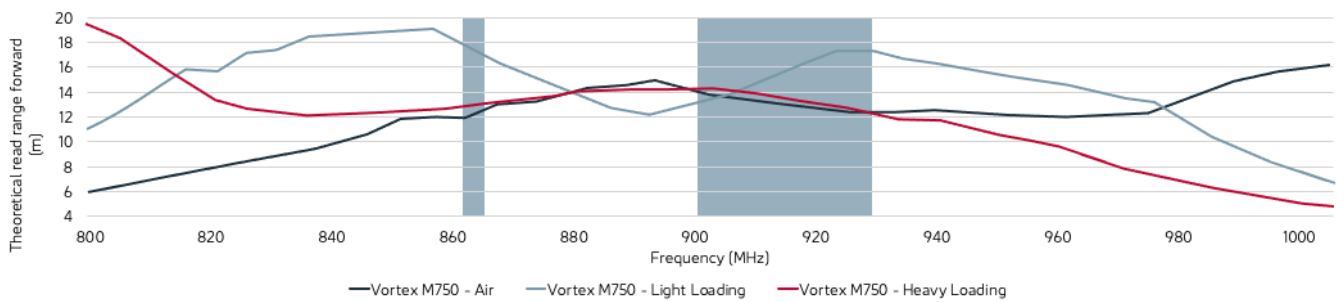


## PERFORMANCE

ETSI Read Range	12.70 m
FCC Read Range	12.96 m

## READ RANGE

Free Space, Light, & Heavy Loading Conditions



## ORIENTATION SENSITIVITY

ETSI

FCC

